

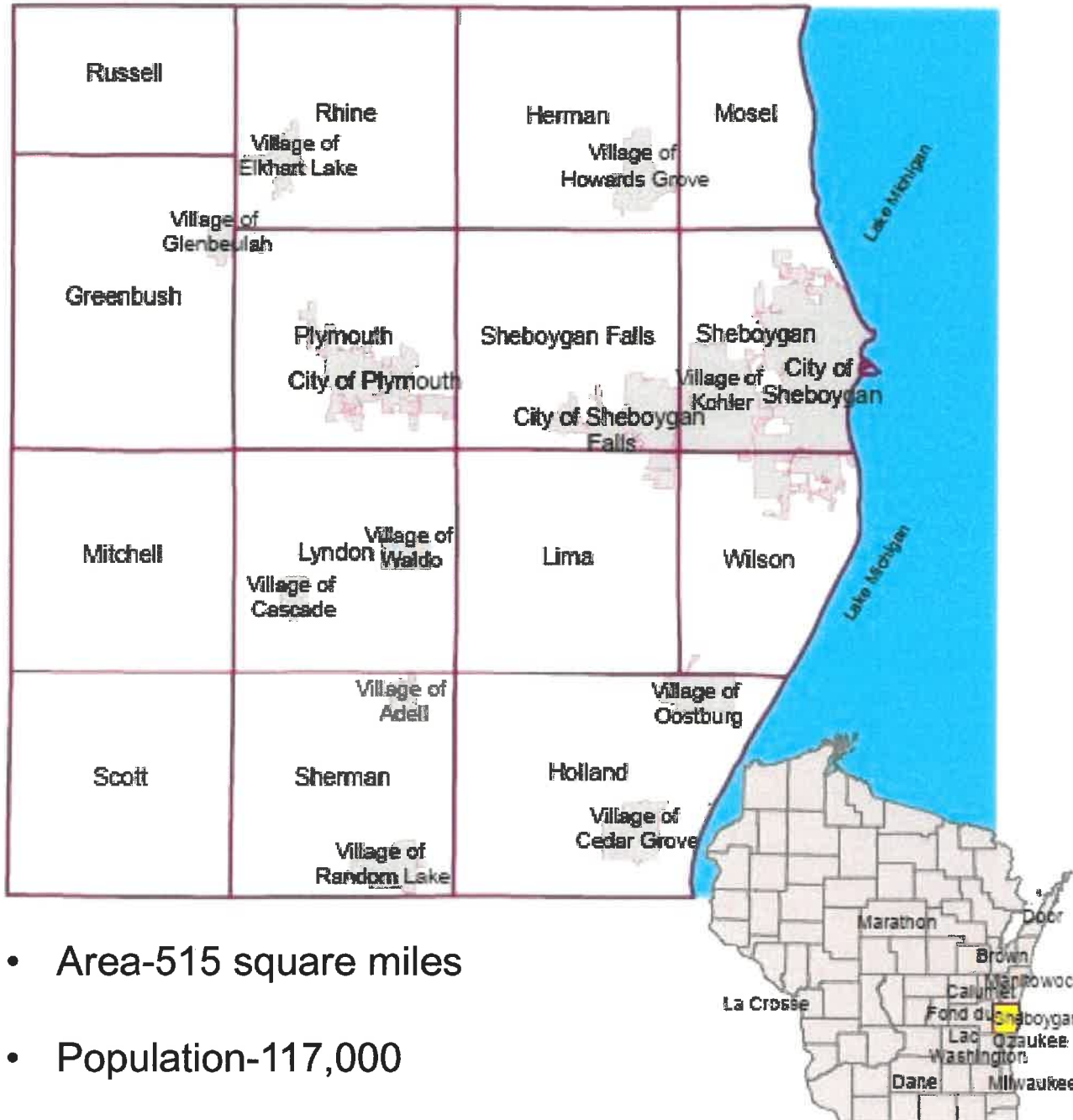
**5 YEAR REVIEW OF
SHEBOYGAN COUNTY
LAND AND WATER RESOURCE
MANAGEMENT PLAN**



**SHEBOYGAN COUNTY
PLANNING & CONSERVATION DEPARTMENT
OCTOBER 6, 2020**

Sheboygan County Location

Sheboygan County, Wisconsin



- Area-515 square miles
- Population-117,000

Legend

- Sheboygan County
- Corporation Limits
- Town Borders
- Lake Michigan



Source: Sheboygan County Planning

Lake Michigan



Kettle Moraine



Broughton Sheboygan Marsh



AGRICULTURE

CAFO'S



- 153,000 cropland acres
- 958 farms
- 115 dairy farms
- 10 dairy CAFO's
- 28,000 dairy cows
- 77,000 total cattle

SMALL GRAZING FARMS

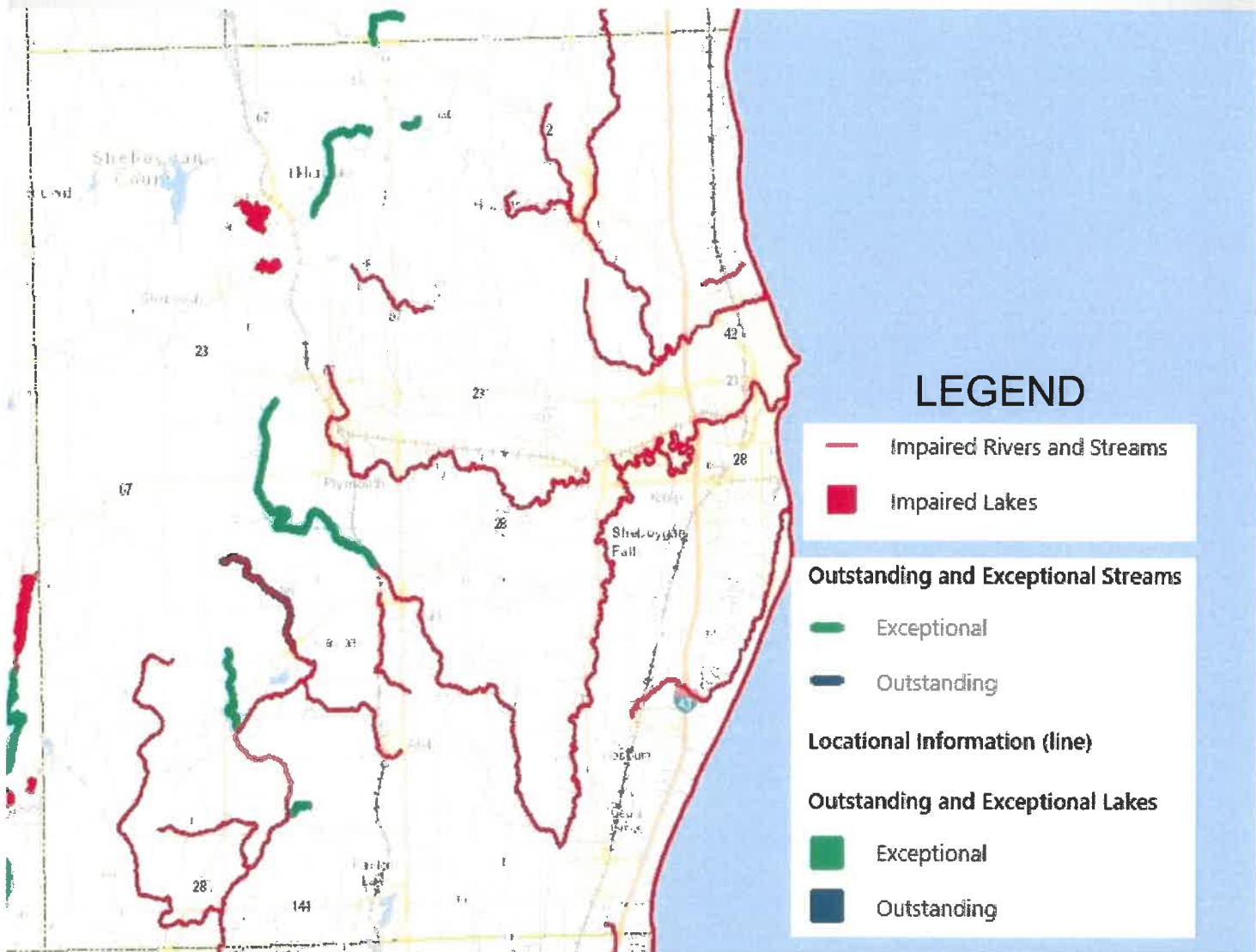


AG. PROCESSING FACILITIES

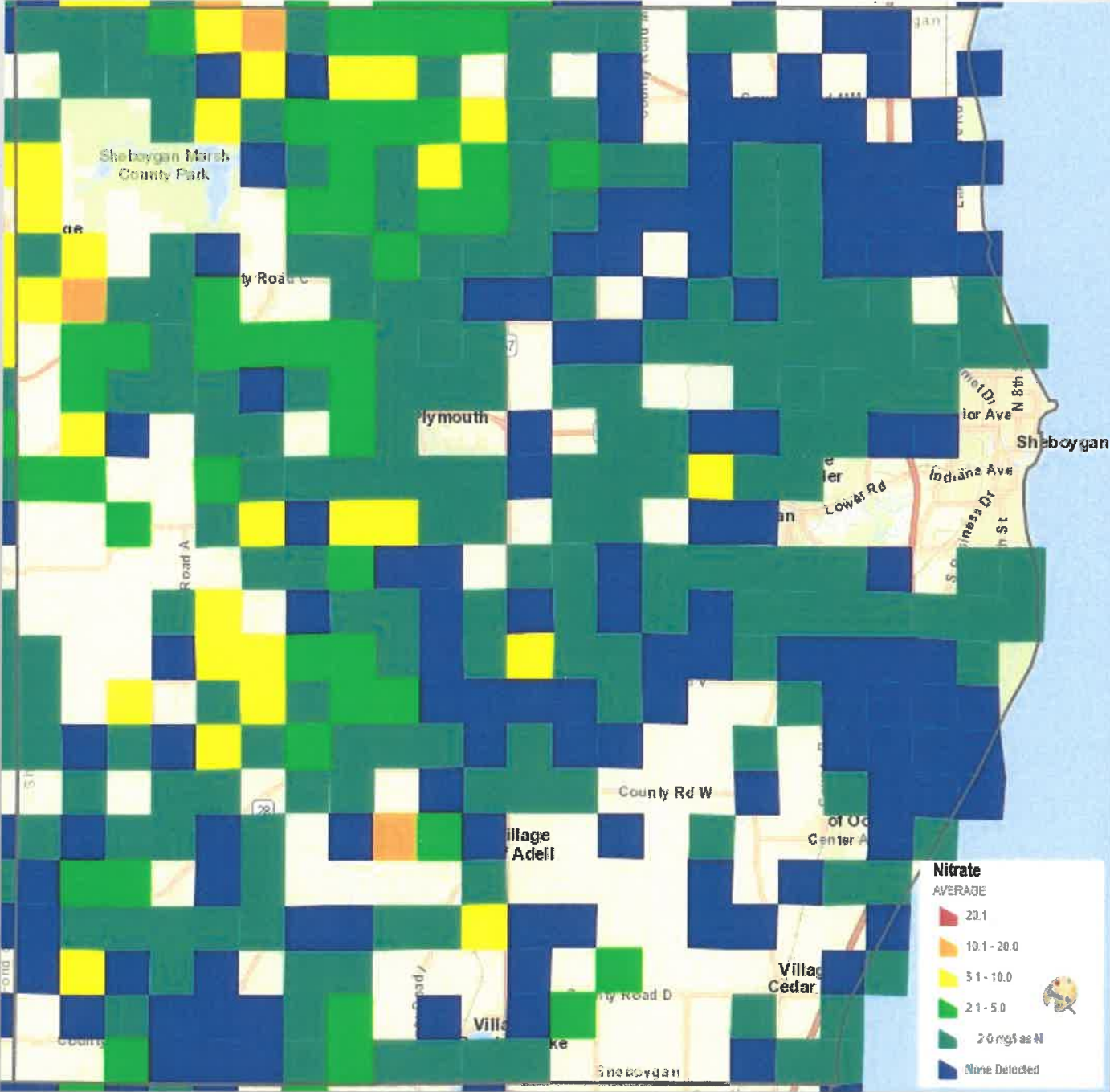
MINK RANCHES



Surface Water Resource Assessment



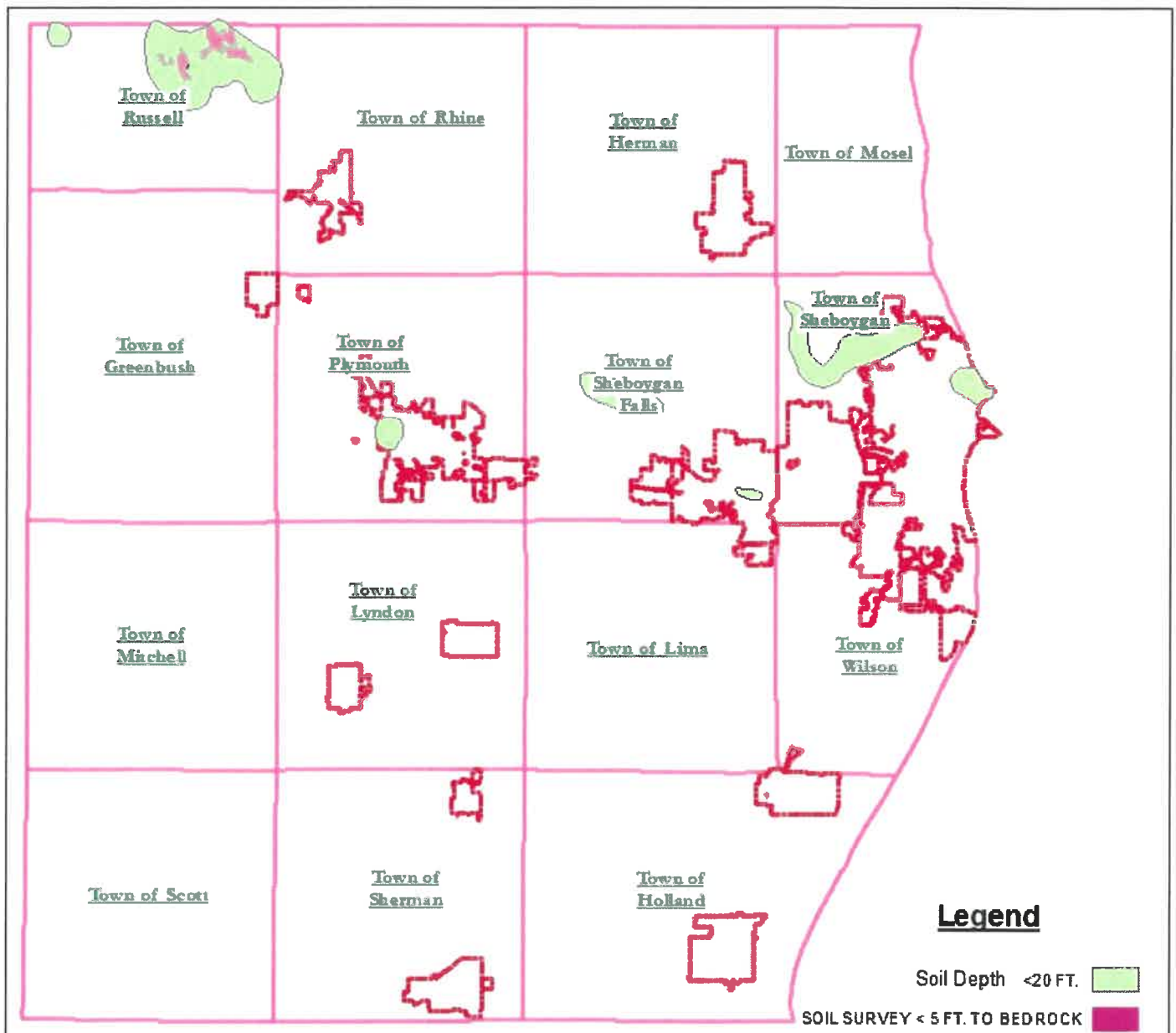
Well Water Nitrate Levels by Section



Source: UWSP Center for Watershed Science and Education

Silurian Bedrock Standard Implementation Areas

- 53 landowners with cropland in the affected areas
- Landowners have been mailed information regarding the Silurian Standard
- Provide technical assistance for bedrock depth determinations and manure application planning



**Sheboygan
County,
Wisconsin**

This map is intended for advisory purposes only. This information has been obtained from sources believed to be reliable based on plans, surveys, and deeds. In cases where discrepancies occur between equivalent legal records, the discrepancy is allowed to remain until such time as it is addressed. Sheboygan County distributes this data on an "as is" basis; no warranties are implied.

9/15/2020

Source: Sheboygan County Planning & Conservation Department
G:\Departments\Planning\Mapdocs\Public Project PDFs\Title Name

0 9,000 18,000'



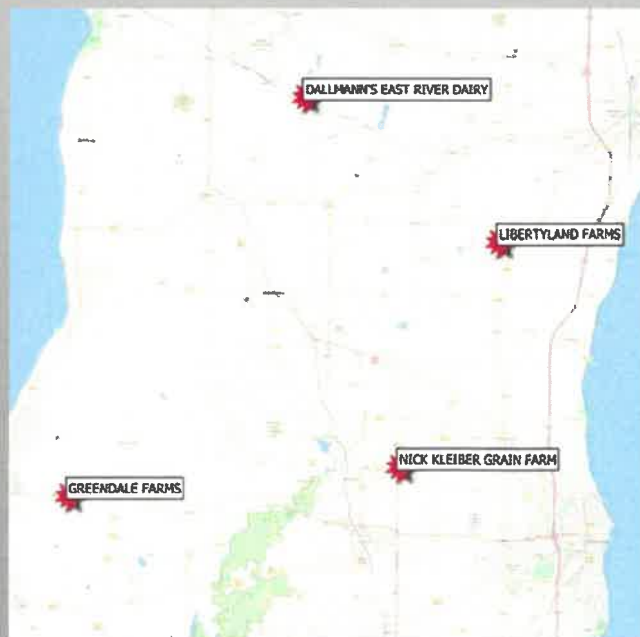
BETWEEN THE LAKES DEMONSTRATION FARMS NETWORK



- Started in 2020
- A three year collaborative effort between the NRCS, Calumet, Manitowoc, Fond du Lac and Sheboygan counties
- One demonstration farm in each county
- The participating farms demonstrate the effectiveness and adaptability of conservation practice systems to reduce erosion and sedimentation, control phosphorus runoff, and address other non-point source pollution issues

Our Department in cooperation with the county NRCS staff has:

1. Participated in Network planning meetings
2. Contributed dollars to help finance the Network
3. Screened potential farmers for being the Sheboygan County host demonstration farm in the Network
4. Conducted interviews with potential host farmers
5. Recommended the county host farmer to the Network
6. Participated in planning the first Network Field Day
7. Mailed over 400 Field Day invitations to Sheboygan County farmers
8. Assisted with hosting the September 2 Field Day





SHEBOYGAN RIVER PROGRESSIVE FARMERS

Farmers helping farmers increase
sustainability & profitability across
the Sheboygan River Basin

A farmer-led group formed in 2017 to test and explore farming strategies that lead to improved soil health, greater farming efficiency, sustain profitability and lessen the impact on the environment.

Our Department has played a supporting role for this group by:

1. Promoting their efforts in our newsletter
2. One on one contacts with farmers informing them of the group's cost-sharing and upcoming events
3. Attending the Field Days, Tours, and Annual Meetings held by the group



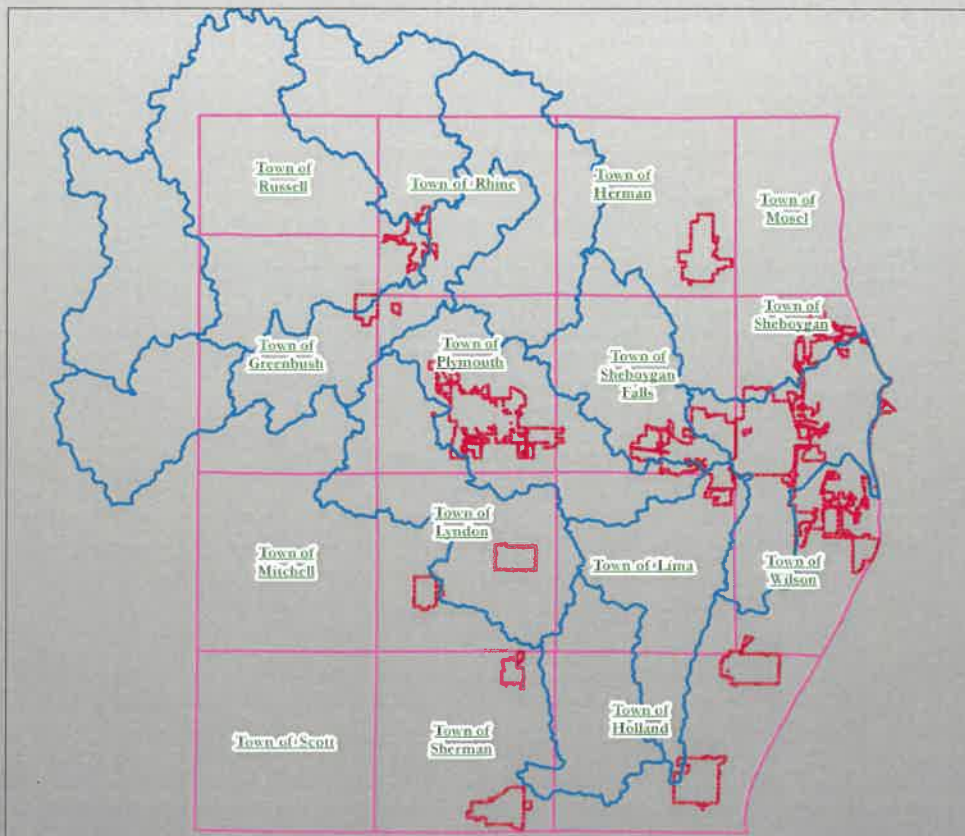
Milwaukee River Regional Conservation Partnership

- A collaborative effort among area stakeholders to address soil erosion, runoff, habitat degradation, and climate resilience across a large and connected watershed community.
- NRCS, Milwaukee Metropolitan Sewerage District, Fond du Lac County, Ozaukee County, Sheboygan County, Washington County and 6 other stakeholders
- All stakeholders are contributing staff hours and implementation \$\$
- Beginning in the fall of 2020 stakeholders will be recruiting landowners to participate in EQIP and CSP.
- Focused on cropland conservation practices to reduce soil erosion and phosphorus runoff
- Sheboygan Co. has eight HUC 12 watersheds in the RCPP area; 5 of which have impaired streams

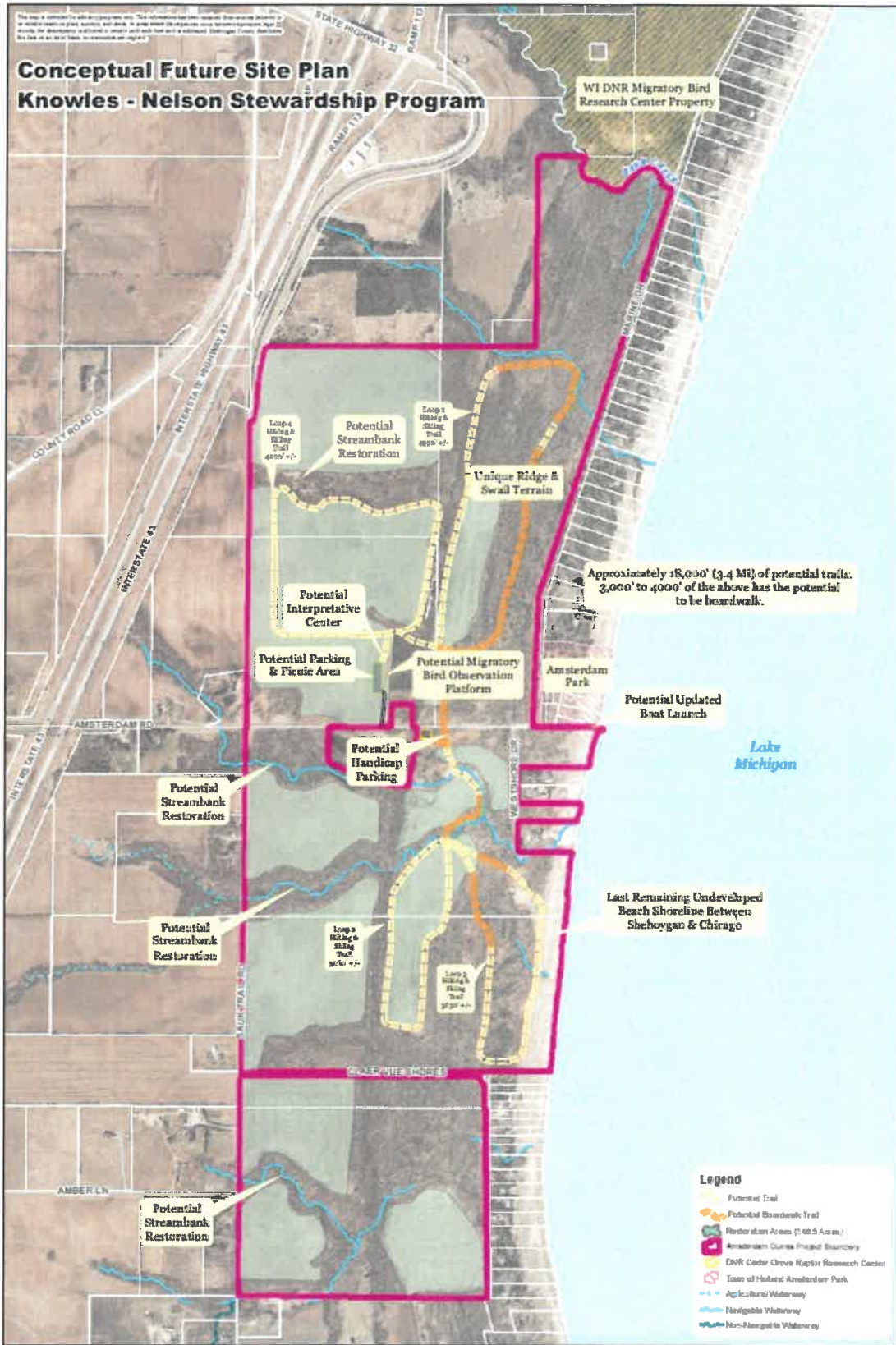


Sheboygan River Basin- 9 Key Element Plan (Plan)

- Watershed plans consistent with EPA's nine key elements provide a framework for improving water quality in a holistic manner within a geographic watershed. The nine elements help assess the contributing causes and sources of nonpoint source pollution, involve key stakeholders, and prioritize restoration and protection strategies to address water quality problems.
- The PLAN will function as an implementation tool for the Northeast Lakeshore TMDL
- Lakeshore Natural Resources Partnership is taking the lead role in having the PLAN written
- Our Department will be providing technical assistance and \$\$ toward the PLAN writing process



Amsterdam Dunes Property



Other Programs/Activities

AG DRAINAGE TILE PHOSPHORUS FILTER

- Installed in 2017
- Utilizes “steel furnace slag
- Retrofitted in '20 with “blast furnace slag
- Many questions unresolved



SEPTIC SYSTEM PHOSPHORUS FILTER

- Installed in 2019
- Utilizes “steel furnace slag”
- 36% average dissolved phosphorus reduction so far



FARMLAND PRESERVATION

- 11 Out of 15 townships participate
- 349 active certificates of compliance



BUFFER STRIP PROGRAM

- Started in 2000
- Currently 87 contracts
- 37 miles of buffer



ANNUAL TREE & SHRUB SALE

- Started in 1999
- 750 orders and 70,000 sold annually over the past five years



QUESTIONS????

